

NEW

Flexible coupling

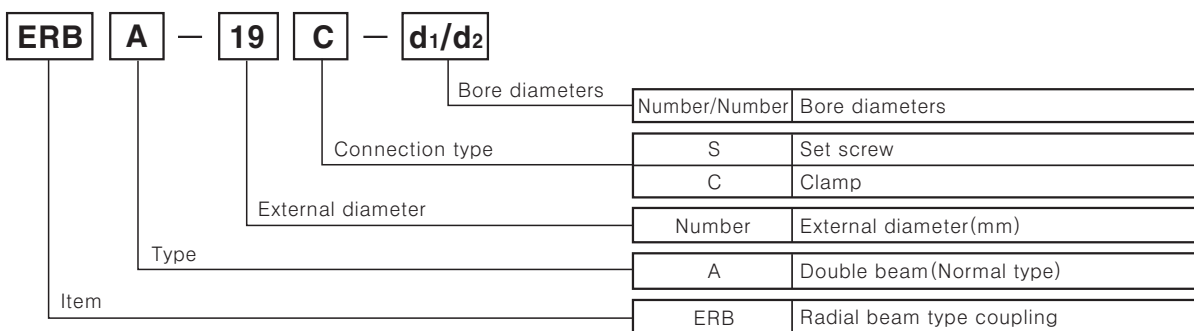
Features

- Zero(0) Backlash
- High torsional stiffness by high strength aluminum alloy AL 7075-T6
- High corrosion resistance by alumite treated surface
- Two connection types(Clamp type, Set screw type)

⚠ Please read "Caution for your safety" in operation manual before using.



Ordering information



Specifications

Model	ERB-A-19C-□	ERB-A-19S-□	ERB-A-26C-□	ERB-A-26S-□
Connection type	Clamp	Set screw	Clamp	Set screw
Max. revolutions	8000 rpm	20000 rpm	6000 rpm	15000 rpm
Max. torque	1.2 N · m (12.17 kgf · cm)		3.0 N · m (30.42 kgf · cm)	
Rated torque	0.6 N · m (6.08 kgf · cm)		1.5 N · m (15.21 kgf · cm)	
Mounting bolt (Mounting torque)	M2.5 (1N · m)	M3 (0.7N · m)	M3 (1.7N · m)	M4 (1.7N · m)
Torsional stiffness	140 N · m/rad		240 N · m/rad	
Moment of inertia	6.4 × 10 ⁻⁷ kg · m ²		3.4 × 10 ⁻⁶ kg · m ²	
Max. allowable misalignment	Angular misalignment	2.5°		
	Parallel misalignment	0.15mm	0.2mm	
	End-play	±0.3 mm	±0.4 mm	
Standard bore diameter (tolerance h7)	φ 4, φ 5, φ 6 mm		φ 6, φ 8 mm	
Min. allowable bore diameter	φ 4 mm		φ 5 mm	
Max. allowable bore diameter	φ 8 mm		φ 12 mm	
Material	Aluminum(AL 7075-T6), Alumite treated surface			
Unit weight	12 g		33 g	

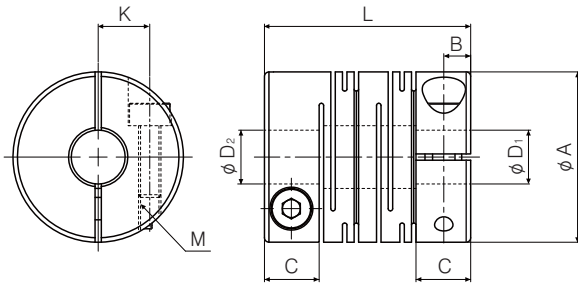
- (A) Photo electric sensor
- (B) Fiber optic sensor
- (C) Door/Area sensor
- (D) Proximity sensor
- (E) Pressure sensor
- (F) Rotary encoder
- (G) Connector/Socket
- (H) Temp. controller
- (I) SSR/Power controller
- (J) Counter
- (K) Timer
- (L) Panel meter
- (M) Tacho/Speed/Pulse meter
- (N) Display unit
- (O) Sensor controller
- (P) Switching power supply
- (Q) Stepping motor & Driver & Controller
- (R) Graphic/Logic panel
- (S) Field network device
- (T) Production stoppage models & replacement

ERB Series

Dimensions

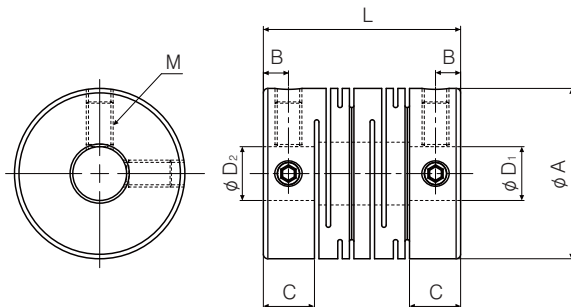
Clamp type

(Unit:mm)



Model	φ A	L	φ D ₁	φ D ₂	M	C	B	K
ERB-A-19C-04/04	19	23	4 ₀ ^{+0.018}	4 ₀ ^{+0.018}	M2.5	6.1	3	5.75
ERB-A-19C-04/05				5 ₀ ^{+0.018}				
ERB-A-19C-04/06				6 ₀ ^{+0.018}				
ERB-A-19C-05/05			5 ₀ ^{+0.018}					
ERB-A-19C-05/06			6 ₀ ^{+0.018}					
ERB-A-19C-06/06			6 ₀ ^{+0.018}					
ERB-A-26C-06/06	26	31.4	6 ₀ ^{+0.018}	6 ₀ ^{+0.018}	M3	7.4	3.7	8.55
ERB-A-26C-06/08				8 ₀ ^{+0.018}				
ERB-A-26C-08/08			8 ₀ ^{+0.018}					

Set screw type



Model	φ A	L	φ D ₁	φ D ₂	M	C	B
ERB-A-19S-04/04	19	22	4 ₀ ^{+0.018}	4 ₀ ^{+0.018}	M3	5.7	2.8
ERB-A-19S-04/05				5 ₀ ^{+0.018}			
ERB-A-19S-04/06				6 ₀ ^{+0.018}			
ERB-A-19S-05/05			5 ₀ ^{+0.018}				
ERB-A-19S-05/06			6 ₀ ^{+0.018}				
ERB-A-19S-06/06			6 ₀ ^{+0.018}				
ERB-A-26S-06/06	26	30	6 ₀ ^{+0.018}	6 ₀ ^{+0.018}	M4	6.8	3.4
ERB-A-26S-06/08				8 ₀ ^{+0.018}			
ERB-A-26S-08/08			8 ₀ ^{+0.018}				

Proper usage

The flexible coupling is available where there are vibration and misalignment. It must be used within the rated allowable misalignment range.

If using the flexible coupling over the rated misalignment range, it may cause vibration or shorten the life cycle.

When there are over than two misalignments, each allowable value is 50%.

It is recommended to use the flexible coupling below 1/3 of the allowable value to extend the life of the coupling and the applied equipment.

Caution for using

- Couplings are for transferring rotation angle and power between shafts. Before using this, be sure the use and the purpose.
- This product uses high strength aluminum alloy and has spring power as Radial beam type. However, if the coupling is dropped, hit or applied excessive power, it may be damaged or transformed.
- If the coupling is applied over the rated misalignment, or the tolerance of the shaft is over the allowable value, it may cause plastic deformation, damage of the product or shorten the life cycle.

- When it occurs abnormal sound during operating the equipment with this coupling, stop the operation and remove the cause such as misalignment, unscrewing, or rotation hazard.
- If this coupling is applied to the equipment which has big fluctuation of load, shaft may be loose by unscrewing. Tighten the screw securely and prevent from unscrewing.
- This product is for transferring rotation power. If there is a risk of human contact, attach the caution label or install a safety cover in a prominent position.
- Rated torque is available to transfer the power continuously. Check the rated capacity before using this product.
- Max. torque is available to transfer the power in a moment. Check the rated capacity before using this product.