



- ETHERNET PROGRAMMING PORT
- RS232 + RS485 PORT, MODBUS OR USER PROGRAMMABLE
- CAN PORT TRIO REMOTE I/O, DEVICENET SLAVE, CANOPEN OR USER PROGRAMMABLE
- SUPPORT FOR SD MEMORY CARD
- STATUS LED'S
- DAUGHTER BOARD CONNECTOR
- 96 WAY CONNECTOR FOR AXIS AND I/O CONNECTIONS
- IP ADDRESS RESET
- 4 OR 8 CHANNEL 16 BIT DAC OPTION

MOTION COORDINATOR

RACK MOUNT

PRODUCT CODE: P159

EURO 209

- Compact And Cost-effective 8 Axis Motion Controller
- For Stepper or Servo Axes
- Communications Processor
- Optional 8 DAC outputs
- Daughter Board Slot For Expandability
- Fast programming via Ethernet Port

The *Motion Coordinator Euro209* is a Eurocard stepper/servo positioner with the built-in ability to control up to 8 servo or stepper motors in any combination. In addition a single Trio Daughter Board may be fitted to allow the control of additional axes or a digital drive interface allowing control of up to 16 axes.

The Euro209 is designed to provide a powerful yet cost-effective control solution for OEM machine builders who are prepared to mount the unit and provide the power supplies required. It is designed to be configured and programmed for the application with Multi-tasking Trio BASIC using a PC, and then may be set to run "standalone" if an external computer is not required for the final system. The system software for the Euro209 allows up to 7 Trio BASIC programs to be run simultaneously on the controller using pre-emptive multi-tasking.

Communications

The Ethernet port allows fast data communication between the Euro 209 and PC and gives the ability to program multiple cards over an Ethernet LAN.

The Euro209 has one RS-232 port and one RS-485 built in that may be configured to run the MODBUS protocol for PLC or HMI interfacing.

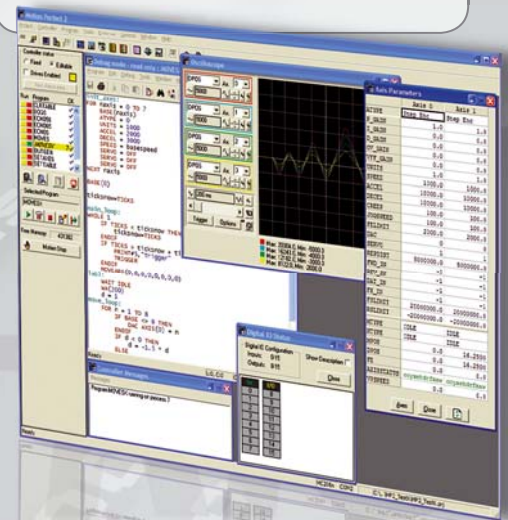
If the built-in CAN channel is not used for connecting I/O modules, it may optionally be used for CAN communications or as a DeviceNet Slave.

Ethernet, USB and Profibus daughter boards may be fitted to provide additional communications options.

The Euro209 features a total of 16 axes in software. Any axes not having a hardware interface can be used as a "virtual" axis. Standard axis or multi-axis digital drive daughter boards may be added to the Euro 209.

Programming

- Multi-tasking Trio BASIC programmed using *Motion Perfect*
- Trio PC for Active-X



Digital Drives Systems Supported

- SERCOS II
- Control Techniques SLM
- CANopen

Factory Communications Options

- DeviceNET
- Profibus
- Modbus
- Modbus TCP

Axes

- 16 software axes
- 9 physical axes

EURO 209 SPECIFICATION

Part Number	P159		
Size	129mm x 170mm Overall (100mm x 160mm PCB) 25mm deep		
Weight	160g		
Temperature Range	0-45 degrees Celsius		
Power Supply	5V		
Maximum Number Of Axes	8 (9 using daughter board)		
Bi-directional Port (Line Driver) RS422	Built In Encoder Inputs:	8 @ 6MHz	
	Built In Stepper Outputs:	8 @ 2MHz	
	Built In Encoder Emulation:	8 @ 2MHz	
Optional Analogue Outputs	4 or 8 @ +/-10V 16 Bit Resolution		
Servo Cycle Time	1000us, 500us, or 250us		
Built In Inputs	16 x 24V Opto-isolated		
Built In Outputs	8 x 24V Opto-isolated		
Built In Bi-directional I/O	None		
Built in Analogue Inputs	2 @ 0-10V 12 Bit Resolution		
Inputs Functions	Forward Limit / Reverse Limit / Datum / F Hold		
Watchdog Relay	1 Solid State - 24V @ 100mA Max Current		
Daughter board Slots	1 Slot		
SD Card	Standard SD card compatible to 2Gbyte		
User Memory	1 Mbyte		
Table Memory	32000 values		
Multi-tasking	2 Fast Tasks + 5 Normal Tasks		

BUILT-IN FACTORY COMMUNICATIONS

Communications	Modbus TCP, <i>Motion</i> Perfect programming, Telnet, Active-X, CANopen, DeviceNet slave, Trio I/O
Ethernet Connections	1 x Programming
Serial Ports	RS232 / RS485 / Modbus
CAN Ports	1 @ 1MBAUD max

Office Ethernet Network



The Ethernet port allows fast data communication between the Euro 209 and PC and gives the ability to programme multiple cards over an Ethernet LAN.

Factory Ethernet Network



Feature Enable Codes

The EURO 209 is supplied as standard with axis 0 and 1 configured as a stepper axes. Software "Feature Enable Codes" can be purchased and then entered using *Motion* Perfect to enable axes 2 - 7 for either servo or stepper operation. Axes 0 - 7 can also be set as servo axes using "Feature Enable Codes" with the addition of the 4 or 8 axis DAC Module.



P447 - EURO 209 DAUGHTER BOARD MOUNTING KIT

Required to fit any daughter board to EURO209 - Includes double width face plate.



PI84 - 4 AXIS DAC MODULE

Provides 4 16 bit outputs and 4 16 bit analogue inputs for the Euro 209



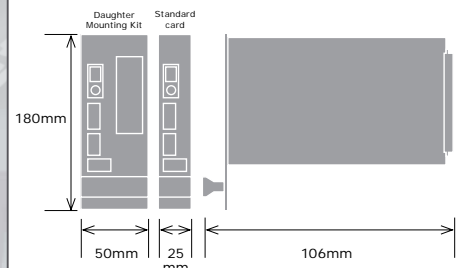
PI85 - 8 AXIS DAC MODULE

Provides 8 16 bit outputs for the Euro 209



PI83 - ADDITIONAL ENCODER AXIS PI82 - ADDITIONAL STEPPER AXIS

Overall Dimensions (shown with Daughter Mounting Kit and standard card)



Trio Motion Technology Ltd.
Shannon Way, Tewkesbury, Glos.
GL20 8ND. UK
Tel: +44 1684 292333
Fax: +44 1684 297929
Email: sales@triomotion.com
Website: www.triomotion.com

Trio Motion Technology LLC
1000 Gamma Drive, Suite 206,
Pittsburgh PA 15238, USA
Tel: +1 412 968 9744
Fax: +1 412 968 9746
Email: enovak@triomotion.com
Website: www.triomotion.com

Trio Shanghai
Thompson Centre,
118 Zhang Yang Road, B1701,
Pudong New Area, Shanghai,
200122, CHINA
Tel/Fax: +86-21-58797659
Email: triomotion@126.com
Website: www.triomotion.com